

# Vacudes PL

Steam disinfection of solid  
and porous goods



MMM Group



- More safety thanks to preventive infection control
- Cost reduction thanks to process and resource optimization
- Reproducibility thanks to validated processes

**MMM.**  
Protecting  
human  
health.

# Vacudes PL



## Disinfection of

- mattresses
- bed linen
- clothing
- waste
- utensils

According to 93/42/EEC „MDD2007“, Vacudes PL steam disinfectant is a medical device and bears CE<sub>0123</sub> mark.

## Battle against multi-resistant germs.

The risk of epidemics and disease transmission by multi-resistant germs and parasites is an increasing threat particularly in health care facilities. Safe infection prevention is indispensable for any goods that are in direct contact with humans, such as mattresses, bed linen, clothing etc. Various methods – for example wiping disinfection – are currently in use to protect both the personnel and the patients. However, if you want to be on the safe side, only automated steam disinfection is effective and reliable. According to the official German Pharmacopoeia, disinfection means to turn dead or living material into a state which is no longer infectious. Automated steam disinfection offers the certitude, that emergence of multi-resistant germs is being prevented.

## Program variability

Vacudes PL is equipped with three different disinfection programs covering the effective range AB, AB + HEPA and ABC for the killing of vegetative cells, such as bacteria, fungi and spores as well as viruses. It also offers the possibility to treat infectious waste in such a way that it can be safely disposed through domestic refuse.

## Program control and operation

The program menu is clearly structured and allows intuitive operation through large and convenient touch screen buttons. The software is easy to understand and offers many individual settings. Program configuration is optimized to the requirements of the goods to be disinfected.

## High operating safety

All processes are validated and run fully automatically by following a pulsing vacuum method. The processing of the goods is traceable and verifiable. Thus, the operator benefits from more costs transparency and a clear conscience when dealing with patients and authorities.

## Energy saving

The AutoStart function is combined with an interval timer to start the vacuum program and preheating of the chamber automatically before start of work. Thus, the steam disinfectant is ready to be used whenever you are. Furthermore, a standby function is automatically activated upon completion of the last program cycle.

## Workflow optimization

The remaining cycle time is clearly displayed on the touch screen and shows the prospective cycle end. This allows to perfectly optimize the workflow in your bed disinfection department.

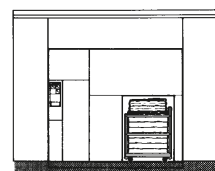
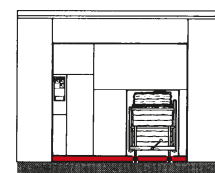




MMM Group

## Models and Sizes

		Nominal size acc. to DIN 58949	Capacity in bed equipment acc. to DIN 58949	Capacity in mattresses acc. to DIN 13014-M 2000	Machine outer dimensions H x W x D
<b>Installation on pedestal</b>					
Vacudes 1500	2	(10 x 8 x 21)	4 BA	6	2488 x 2490 x 2860
Vacudes 2000	3	(12 x 10 x 21)	7 BA	9	2488 x 2690 x 2860
Vacudes 3000	4	(16 x 10 x 21)	10 BA	12	2488 x 2690 x 2860
<b>Installation in a pit</b>					
Vacudes 1501	2	(10 x 8 x 21)	4 BA	6	2318 x 2490 x 2860
Vacudes 2001	3	(12 x 10 x 21)	7 BA	9	2318 x 2690 x 2860
Vacudes 3001	4	(16 x 10 x 21)	10 BA	12	2318 x 2690 x 2860



## Independent steam supply

If a central clean steam supply is not available on site, Vacudes PL can be equipped with an electric steam generator for independent steam generation.

## Vacuum pump and cooling circuit

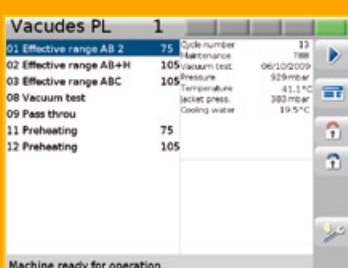
In combination with a cooling circuit on site, which reduces the water consumption by up to 90 %, the powerful and low-noise two-stage vacuum pump helps decreasing the all-over media consumption considerably.

## Documentation system

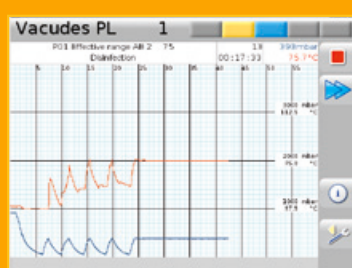
For documentation purposes of the correctly run disinfection process, the batch protocol is printed either on an integrated or an external printer. In addition, process data can be transmitted to a server for storage.

## Additional equipment and accessories

- Batch printer
- Programs for epidemics (designed in compliance with the German Federal Epidemics Act (BseuchG) according to the requirements of the German Robert Koch Institute)
- Condensate disinfection
- Air filter for the decontamination of exhausted air
- Side facing and additional panelling
- Steam generator
- Loading carts
- Mobile containers for the transport of infectious goods
- Barcode management with automatic program proposals
- User management with configurable access control
- Parameter management with multi-level access control



Program selection



Cycle diagram



Remaining cycle time



Service menu



## MMM Group

As one of the world's leading suppliers of sterile processing systems, MMM has been working actively to promote good health since 1954. With a full range of sterilization and disinfection products and services – that can be found in every branch of health-care from hospitals and scientific institutes, to laboratories and the pharmaceutical industry – MMM, has over the years, consolidated its position as a pioneer of quality and innovation both in the German and international market. In our two production facilities based in Stadlern, Germany, and Brno, in

the Czech Republic, we manufacture products that meet the highest demands of our customers world wide. The depth and precision of production standards at both plants ensure that we accomplish the rigorous quality requirements of medical engineering.

900 competent employees work together as a committed and enthusiastic team, dedicated to achieving the mission of the MMM Group.

**Protecting human health.**



MMM Münchener  
Medizin Mechanik GmbH  
Sammelweisstraße 6  
D-82152 Planegg / Munich  
Phone: +49 89 89918-0  
Fax: +49 89 89918-118  
[www.mmmgroup.com](http://www.mmmgroup.com)

presented by:

